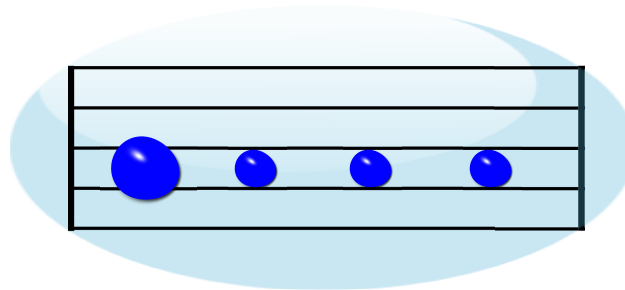


Secret Instructions

first **note** in every bar is
always **louder** than
the other notes



bar



rest
(silence)

Try Playing!

short snake long snake

Snakes!

A musical staff with a treble clef and a 4/4 time signature. A green snake with black spots is coiled around the staff. The staff is divided into two sections: 'short snake' and 'long snake'. The 'short snake' section contains three notes: a red note with a face, an orange note, and a yellow note. The 'long snake' section contains seven notes: a yellow note with a face, a yellow note, a green note, a light blue note, a light blue note, a green note, and a yellow note. The notes are arranged in a sequence that follows the snake's path.